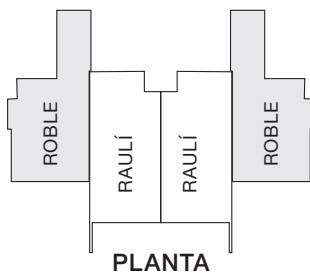


Houses & Residences
AMBIENTA
PINARES DEL LAGO · PUCÓN

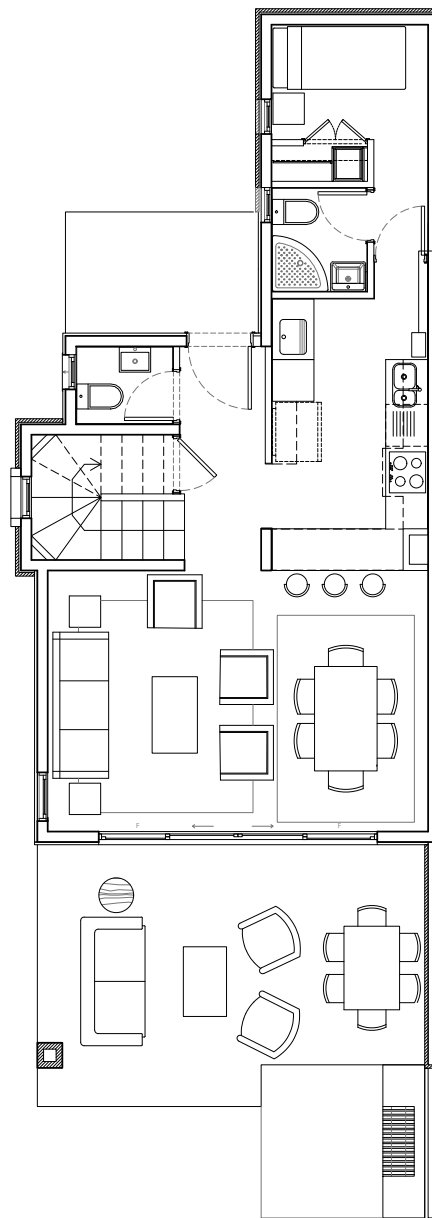
TOWNHOUSE
ROBLE

4D+4B

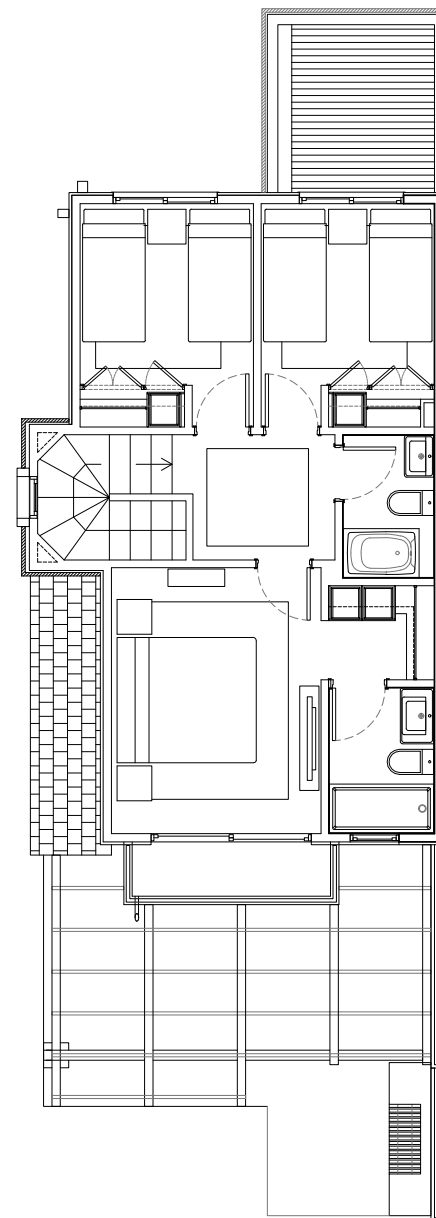
98 M2 INTERIOR
25 M2 TERRAZA 1ER PISO
2 M2 TERRAZA 2DO PISO
125 M2 TOTALES



www.pinaresdellago.cl



PRIMER PISO



SEGUNDO PISO